



PIERCE

1071 sq. ft.
2 Bed, 1 Bath

Front Door: 2-Panel Craftsman with Clear Glass
(painted black w/ clay frame)

Shingles: Driftwood

Siding: Clay

Shutters: Black

Shakes: Clay

Trims/Corners: White

Window Grids: Black w/ 4-Over-4 Grids
(w/ white vinyl lineals)

- Affordable, accessible cottage with 2 bedrooms and 1 bathrooms.

- Rendering shown with standard 5/12 pitch, site-built reverse gable porch and attached garage.

- Plan contemplates an attached, site-built 2-car (24'x24') garage.



BEDS



DIMENSIONS



AREA

Optional



BASEMENT



CRAWLSPACE

Optional



5/12

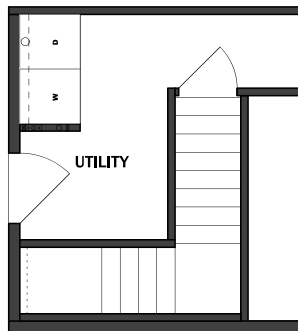
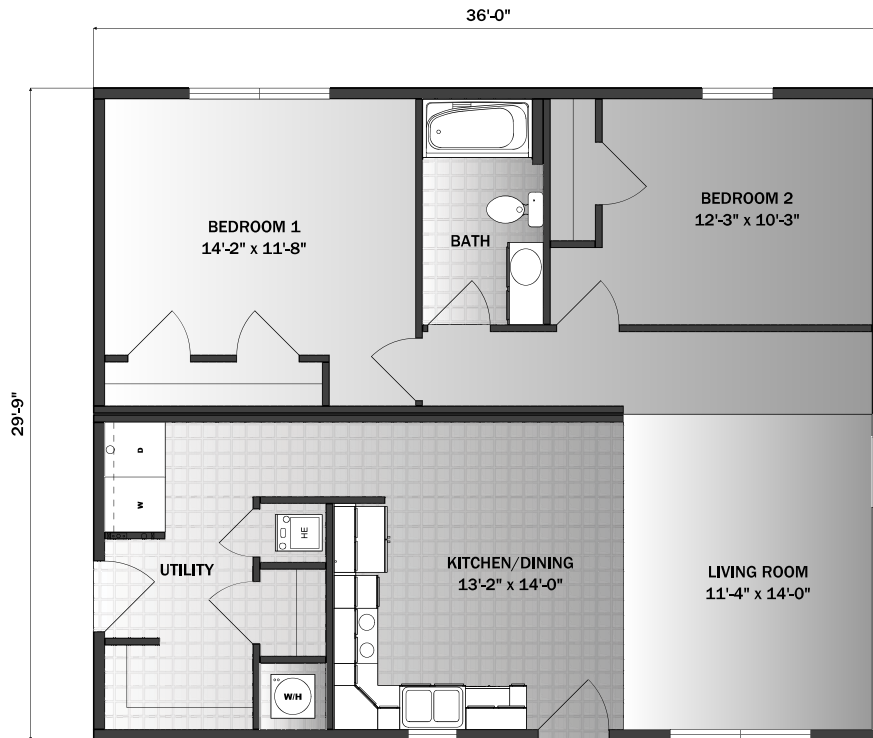


7/12

FOUNDATION

ROOFING

PIERCE



OPTIONAL BASEMENT STAIRWELL

1071 sq. ft.

2 Bed, 1 Bath

- 1,071 sq. ft. 2 bedroom, 1 bathroom cottage plan with efficient layout.
- Open concept plan with eat-in kitchen open to informal dining area and living room.
- Plan is shown with in-home furnace and water heater, for which a basement stairwell can substitute



570.345.6500



pleasantvalleymodularhomes.com



Pleasant Valley Homes



Pleasant Valley Modular Homes
100 Hammersmith Drive P.O. Box 88
Pine Grove, PA 17963