



KNOX

1205 sq. ft.
2 Bed, 2 Bath

Front Door: 2-Panel Half-Glass

Shingles: Estate Gray

Siding: Sagebrook

Shakes: Beige

Trims/Corners: White

Window Grids: 6-Over-1 (Top Sash Only)

- Rendering shown with optional 7.0/12 pitch and optional bump-out with reverse gable dormer.

- Plan contemplates an attached, over-sized (26'0" wide) site-built 2-car garage and 5'x5' covered entry.

- Outdoor living area accessible via patio door adjacent to dining area.



BEDS



BATHS



DIMENSIONS



AREA



BASEMENT



CRAWLSPACE



PILINGS



5/12



7/12



8/12



9/12



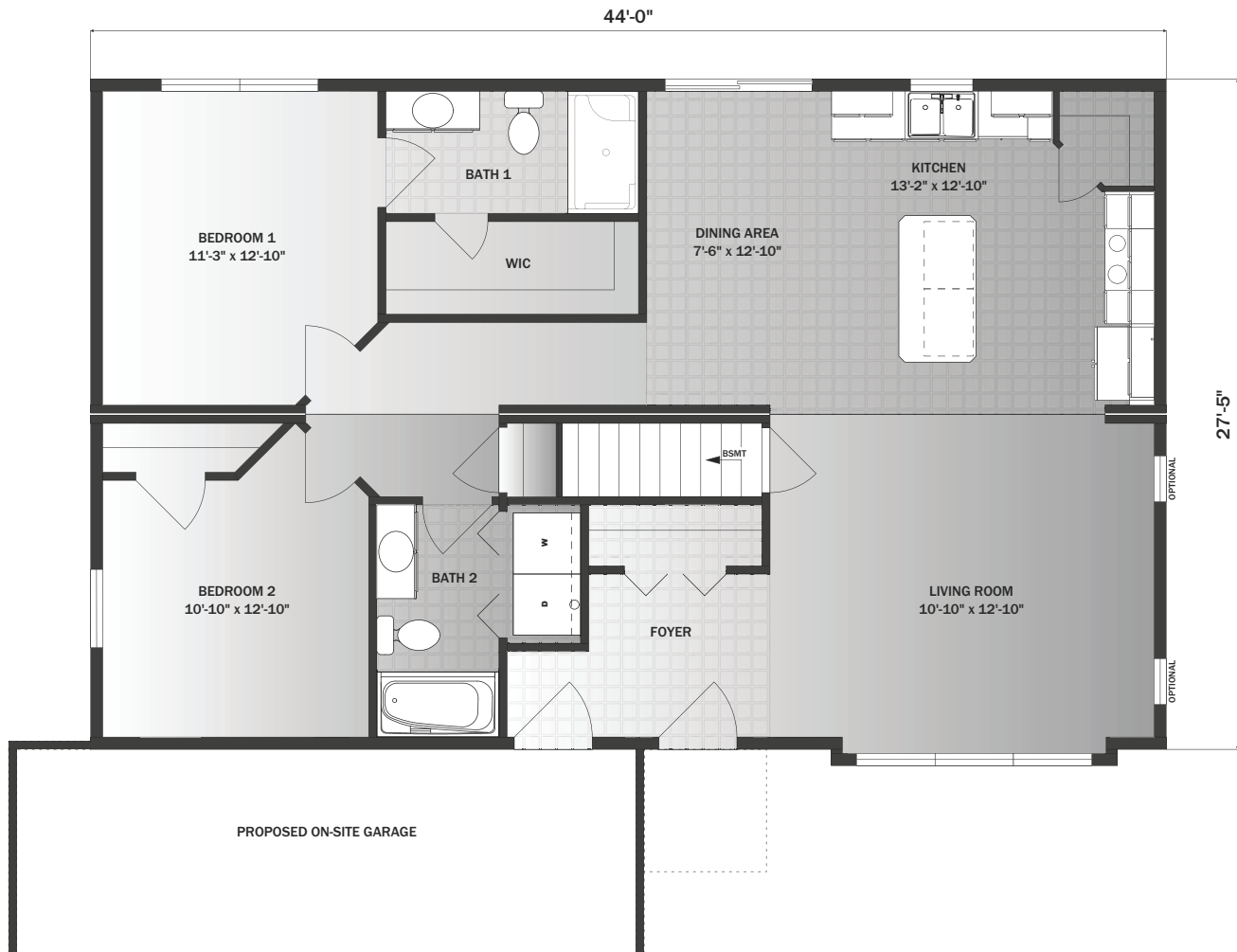
12/12

Optional

FOUNDATION

ROOFING

KNOX



1205 sq. ft.

2 Bed, 2 Bath

- 1,205 sq. ft. 2 bedroom, 2 bathroom ranch with site-built attached garage and covered entry.
- Open concept plan with oversized eat-in kitchen attached to a casual dining area.
- Primary bedroom features an en-suite bathroom with double-bowl vanities and 48" 1-piece fiberglass 1-seat shower.



570.345.6500



pleasantvalleymodularhomes.com



Pleasant Valley Homes



Pleasant Valley Modular Homes
100 Hammersmith Drive P.O. Box 88
Pine Grove, PA 17963